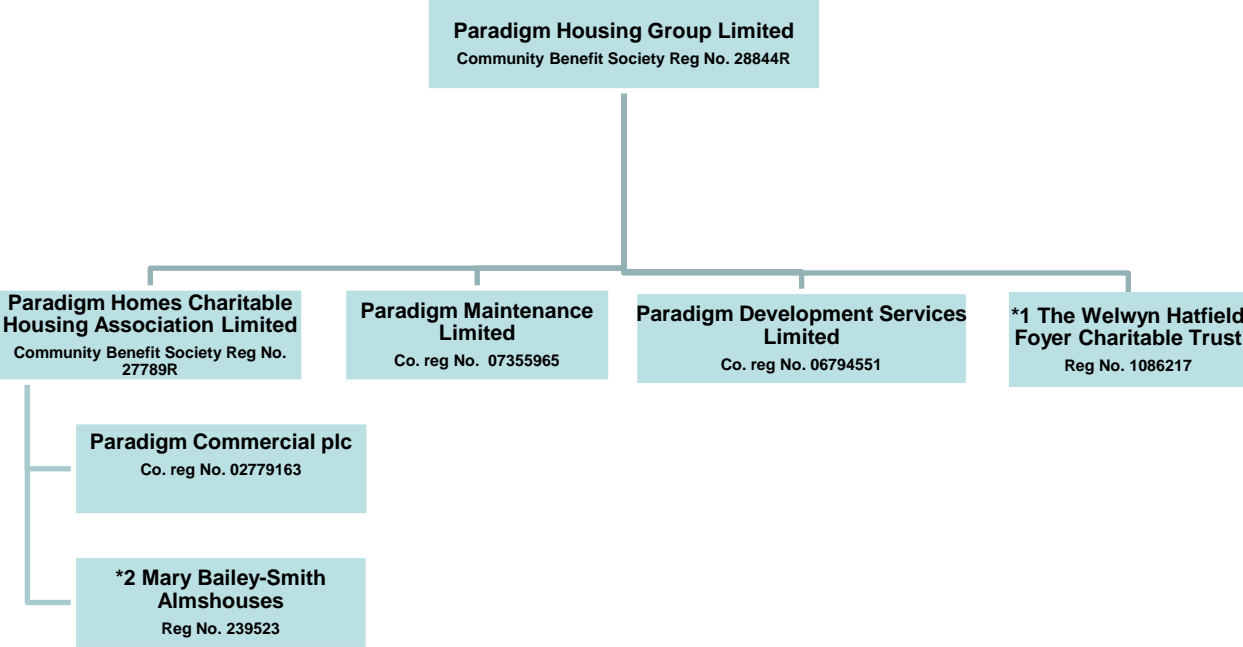


Paradigm – entity group structure



*1 The Welwyn Hatfield Foyer Charitable Trust is a registered charity, number 1086217 to whom Paradigm Homes Charitable Housing Association Limited nominates Trustees.

*2 Mary Bailey-Smith Almshouses is a registered charity, number 239523, Paradigm Homes Charitable Housing Association Limited acts as Trustee.

